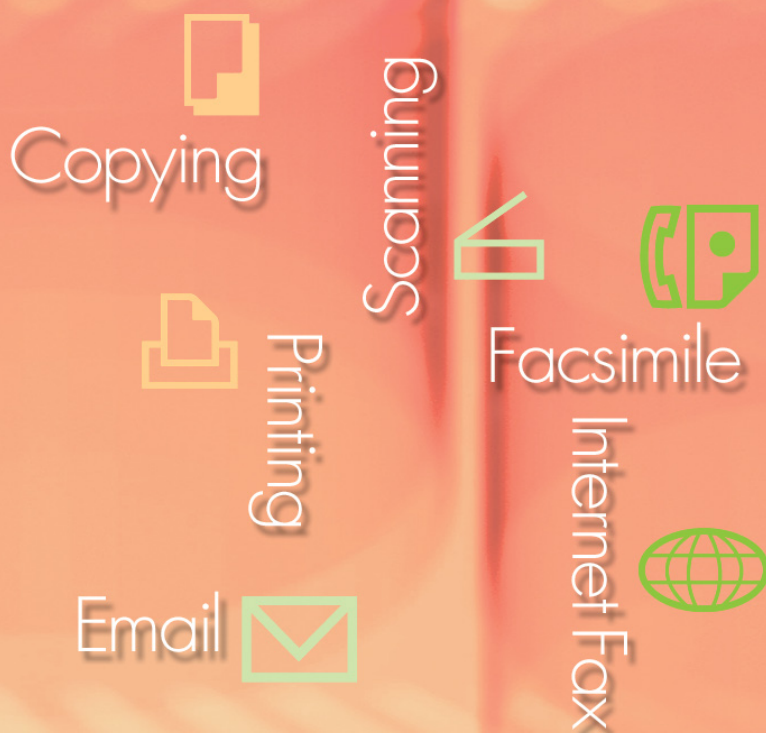


Operating Instructions Software (Device Monitor) For Digital Imaging Systems



Before using this software, please carefully read these instructions completely and keep these operating instructions in a safe place for future reference.

English

General Description

System Requirements

Starting & Setting
the Device Monitor

Using Device Monitor

The following trademarks and registered trademarks are used throughout this manual:

Microsoft, MS-DOS, Windows, Windows Server, Windows Vista, PowerPoint, Excel and Internet Explorer are either registered trademarks or trademarks of Microsoft Corporation in the United States and/or other countries.

Microsoft product screen shot(s) reprinted with permission from Microsoft Corporation.

i386, i486, Intel, Celeron, Intel Centrino, Pentium and Itanium are trademarks of Intel Corporation and its subsidiaries.

IBM and AT are the trademarks or registered trademarks of International Business Machines Corporation in the U.S. and other countries.

The USB-IF Logos are trademarks of Universal Serial Bus Implementers Forum, Inc.

Mac, Mac OS, Macintosh, True Type and Apple are trademarks of Apple Inc., registered in the U.S. and other countries.

Novell, NetWare, IntranetWare, NDS are registered trademarks of Novell, Inc. in the USA and other countries.

PEERLESSPage™ is a trademark of the PEERLESS Systems Corporation; and, PEERLESSPrint® and Memory Reduction Technology® are registered trademarks PEERLESS Systems Corporation; and, COPYRIGHT © 2005 PEERLESS Systems Corporation.

COPYRIGHT © 2005 Adobe Systems Incorporated. All Rights Reserved; and Adobe® PostScript® 3™.

Universal Font Scaling Technology (UFST) and all typefaces have been licensed from Monotype Imaging Inc.

Monotype® is a registered trademark of Monotype Imaging Inc. registered in the U.S. Patent and Trademark Office and may be registered in other jurisdictions.

ColorSet™ is a registered trademark of Monotype Imaging Inc. registered in the U.S. Patent and Trademark Office and may be registered in other jurisdictions. ColorSet™ Profile Tool Kit, Profile Studio and Profile Optimizer are trademarks of Monotype Imaging Inc. and may be registered in certain jurisdictions.

COPYRIGHT © 2007 Monotype Imaging Inc. All Rights Reserved.

PCL is a trademark of Hewlett-Packard Company.

Adobe, Acrobat, Adobe Type Manager, PostScript, PostScript 3 and Reader are either registered trademarks or trademarks of Adobe Systems Incorporated in the United States and/or other countries.

Application software for this device contains a number of programs licensed under the terms of the GNU Lesser General Public License and other open software. For more details and applicable license thereof, please refer to the Read Me file for the software.

All other product/brand names, trademarks or registered trademarks identified herein are the property of their respective owners.

In these Operating Instructions, some ™ and ® marks are omitted from the main text.

© Panasonic Communications Co., Ltd. 2005-2008

Unauthorized copying and distribution is a violation of law.

Panasonic accepts no liability for any effects resulting from the use of this software or manual.

Published in Japan.

The contents of these Operating Instructions are subject to change without notice.

Table of Contents

- General Description 4**
- System Requirements 6**
- Starting & Setting the Device Monitor 8**
 - Starting the Device Monitor 8
- Using Device Monitor 10**
 - Main Window 10
 - Error Notify 15
 - Taskbar Icon..... 16

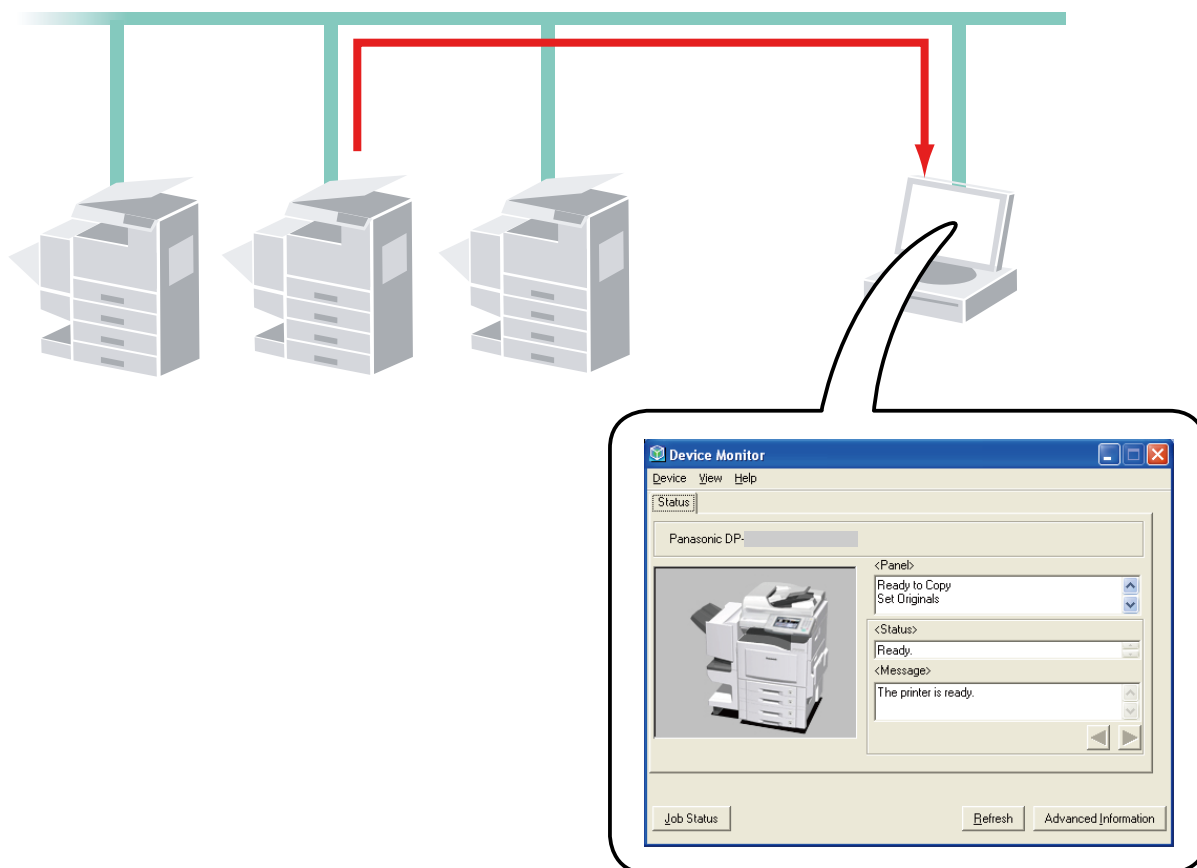
NOTE

Model availability depends on the destination country.

General Description

The Device Monitor software displays detailed status information for devices connected to the network, and displays notification when events such as errors or print job completion occur. The software can also be used to check the level of consumables such as toner and paper. The software must be installed separately on each PC on the network.

Displays the status and the connection of the device.



NOTE

1. When managing a number of devices from a single computer, you can use Device Explorer to search the network for all connected devices, and display them in a list. You can then open the Device Monitor for a device by selecting it in the Device Explorer device list.
2. Although the Device Explorer and Device Monitor are typically used together, you can also use the two utilities independently if you wish.
You can use the Device Monitor on its own in cases such as, when there are few devices connected to a computer, or when you normally use a particular device only from that computer.
3. If an error occurs during printing, the Device Monitor displays a popup message automatically to inform you of the details.

Memo

System Requirements

- Personal Computer : IBM® PC/AT® and compatibles (CPU Intel® Pentium® 4 1.6 GHz or greater is recommended)
- Operating System : Microsoft® Windows® 2000 operating system (Service Pack 4 or later)*¹,
Microsoft® Windows® XP operating system (Service Pack 2 or later)*²,
Microsoft® Windows Server® 2003 operating system (Service Pack 1 or later)*³,
Microsoft® Windows Vista® operating system*⁴,
Microsoft® Windows Server® 2008 operating system*⁵ .

* The following Operating System is not supported :
Microsoft® Windows Server® 2003 Enterprise Edition for Itanium®-based systems,
Microsoft® Windows Server® 2008 Enterprise Edition for Itanium®-based systems.
- Application Software: Microsoft® Internet Explorer® 6.0 Service Pack 1 or later,
Microsoft® .NET Framework Version 2.0,
.NET Framework Version 2.0 Language Pack .
- System Memory : Recommended Memory for each OS:

Microsoft® Windows® 2000 operating system	: 256 MB or more
Microsoft® Windows® XP operating system	: 512 MB or more
Microsoft® Windows Server® 2003 operating system	
Microsoft® Windows Vista® operating system	: 1 GB or more
Microsoft® Windows Server® 2008 operating system	
- Free Disk Space : 300 MB or more
- CD-ROM Drive : Used for installing the software and utilities from the CD-ROM.
- Interface : 10Base-T/100Base-TX/1000Base-T Ethernet Port, USB Port, Parallel Port
(The interface that can be used is different depending on the model)

*1 Microsoft® Windows® 2000 operating system (hereafter Windows 2000)

*2 Microsoft® Windows® XP operating system (hereafter Windows XP)

*3 Microsoft® Windows Server® 2003 operating system (hereafter Windows Server 2003)

*4 Microsoft® Windows Vista® operating system (hereafter Windows Vista)

*5 Microsoft® Windows Server® 2008 operating system (hereafter Windows Server 2008)

Memo

Starting the Device Monitor

The Device Monitor displays the connection and device status for all connected devices, and notifies the user of occurring events, such as a device error, supply levels, or a print job completion.

Use one of the following methods to launch the Device Monitor.

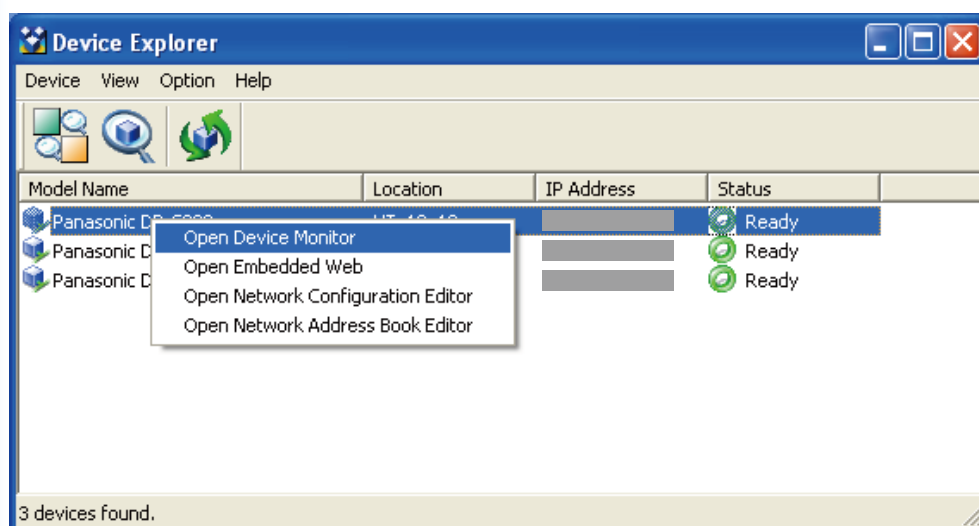
■ Launching from the Device Explorer

When the Device Explorer starts, it displays a list of the devices connected to the computer.

To check the status of a device, double-click on the desired device to launch the Device Monitor.

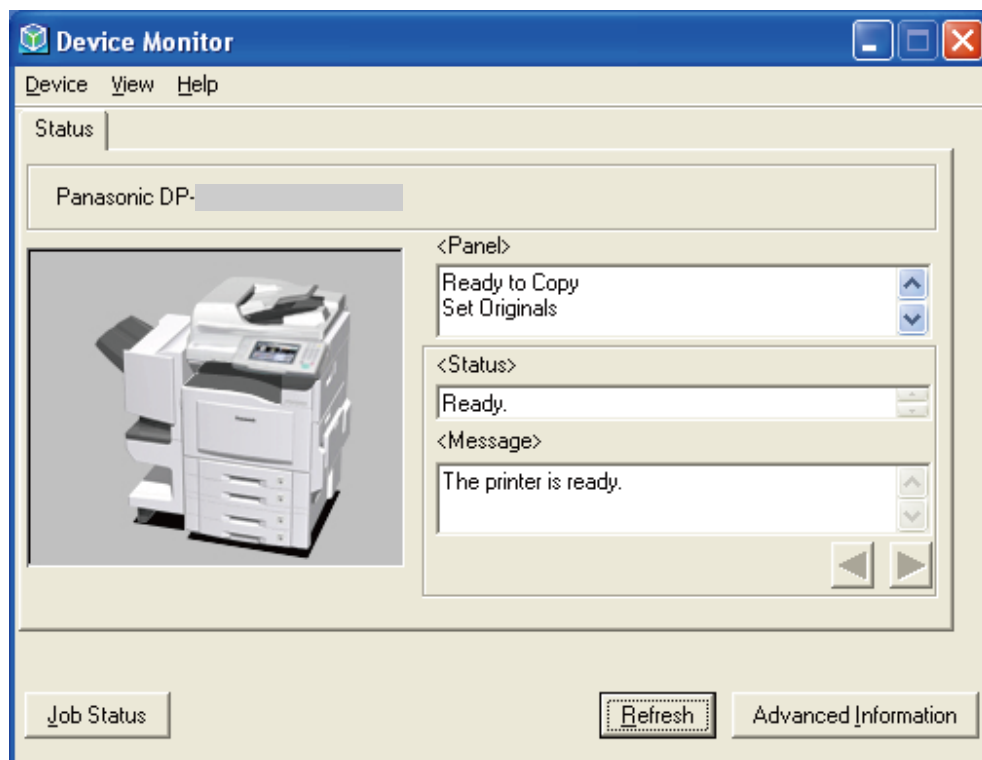
Conversely, right-click on the desired device to open a device menu from which you can run various Panasonic Document Management System applications.

Selecting **Open Device Monitor** from the menu starts the Device Monitor.



NOTE

If the desired device does not appear on the list, confirm the Community Name set in the Device Explorer. Refer to "Operating Instructions (For Device Explorer and Embedded Web Server)".



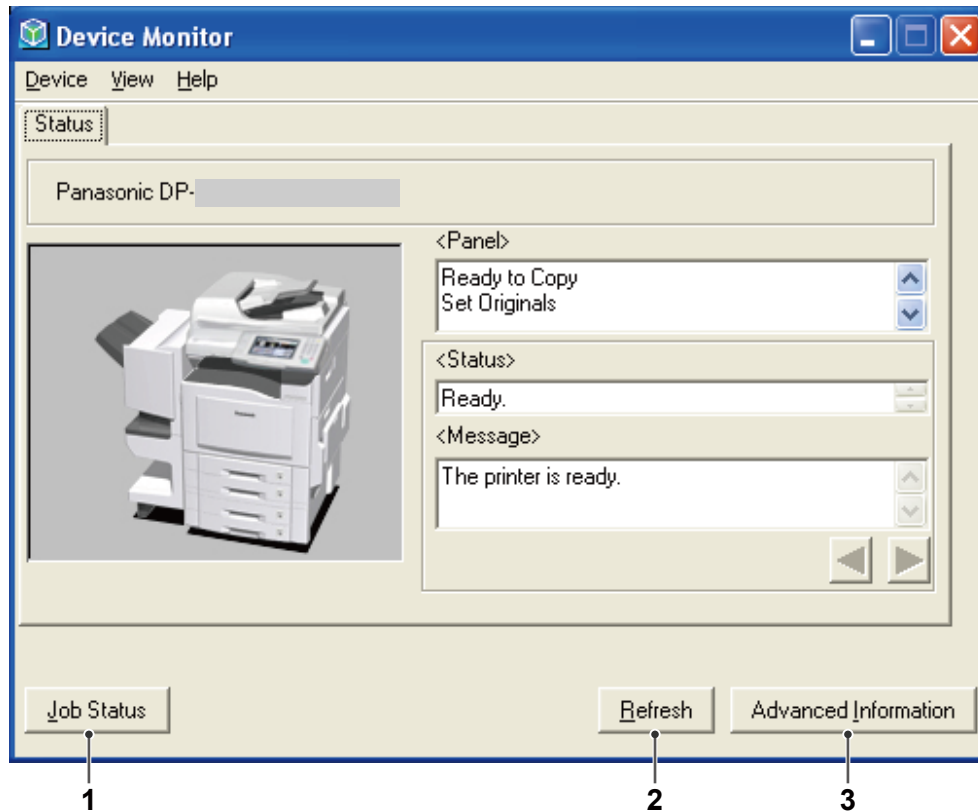
- The displayed screen varies depending on the models.

NOTE

If your device illustration is not shown properly on the **Device Monitor** screens, select the **Device Monitor Optional** model support in the **Optional Software Tab** from the **Panasonic Document Management System CD's launch screen**, to download the latest model module for the software. Install the latest model module first, and then open the **Device Monitor**.

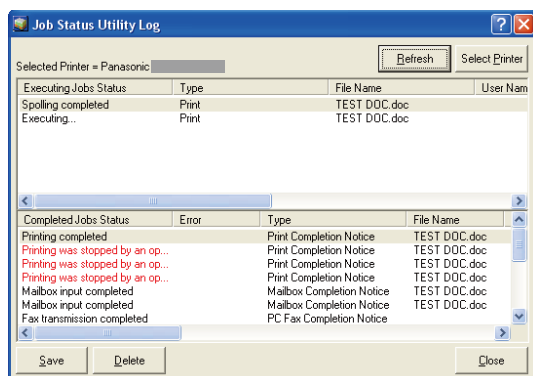
Main Window

The Device Monitor dialog box displays the connection and device status of the selected device.



1. **Job Status** button

Displays Job Status screen to confirm the state of job sent to the device.



2. **Refresh** button

Refreshes the device list with the latest information.

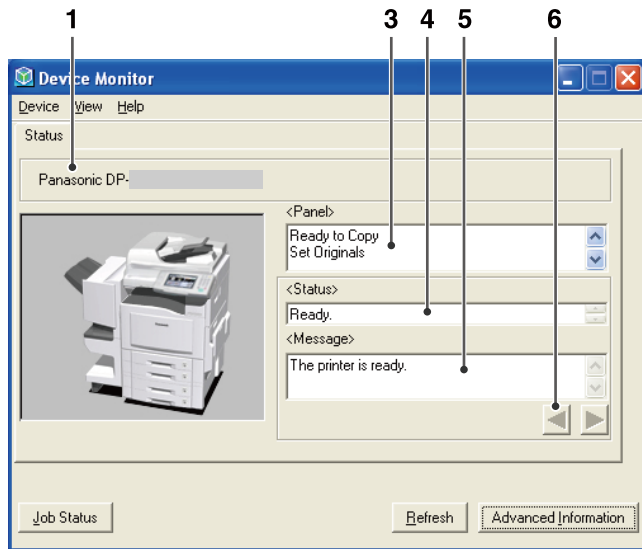
3. **Advanced Information** / **Basic Information** button

Switches between the simplified and detailed version of the Device Monitor dialog box.

The detailed version of the dialog box contains four tabs: **Status tab**, **Device tab**, **Network tab**, and **Links tab**.

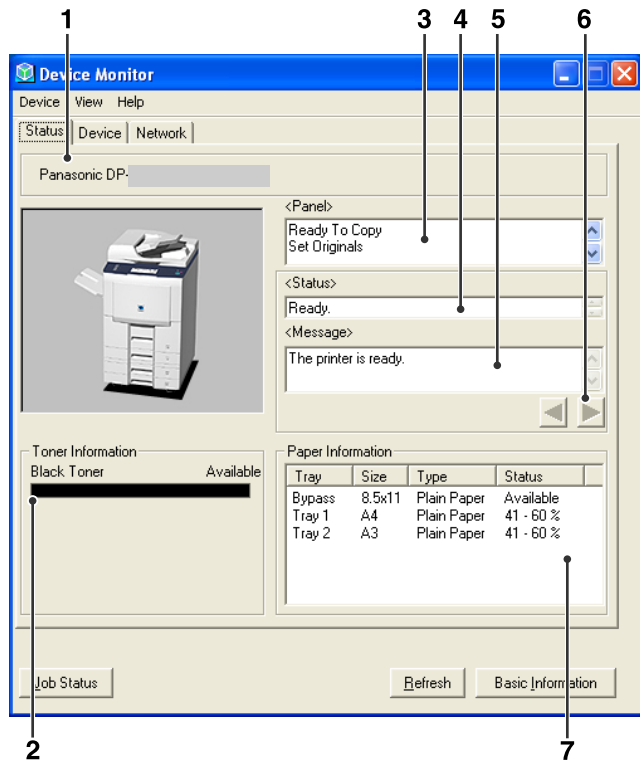
Main Window

■ Status Tab



(For Panasonic Color MFP)

- The displayed screen varies depending on the models.



(For Panasonic Monochrome MFP)

- The displayed screen varies depending on the models.

1. Model Name

Displays the **Model Name** and Interface information for the selected device.

2. Toner Information

Displays the level of toner remaining in the device.

3. Panel

Shows the message being displayed on the device's **Control Panel**.

4. Status

Displays the device status.

5. Message

Displays a message describing the device's status.

6. ◀ / ▶ button

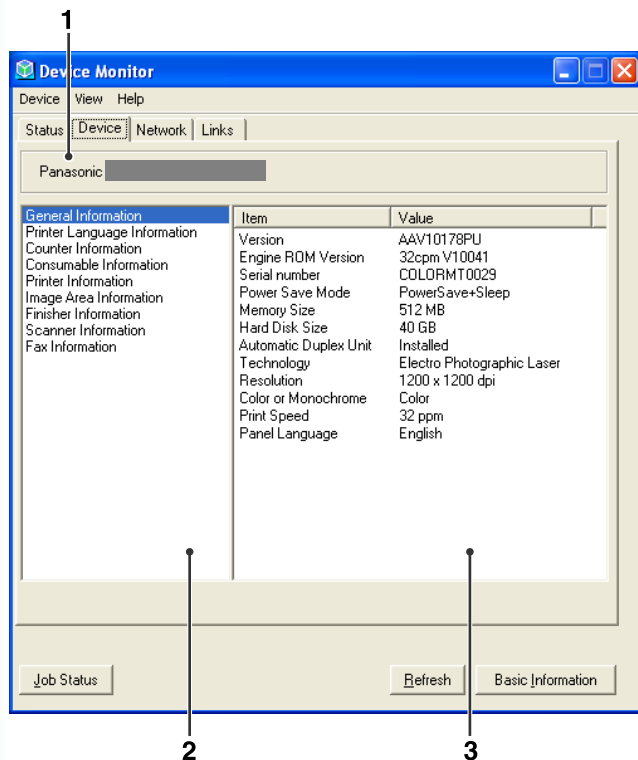
If the device has more than one status displayed, these buttons step forwards or backwards through the messages.

7. Paper Information

Shows the **Paper Tray**, **Size**, **Type**, and **Status** (paper remaining) in the device.

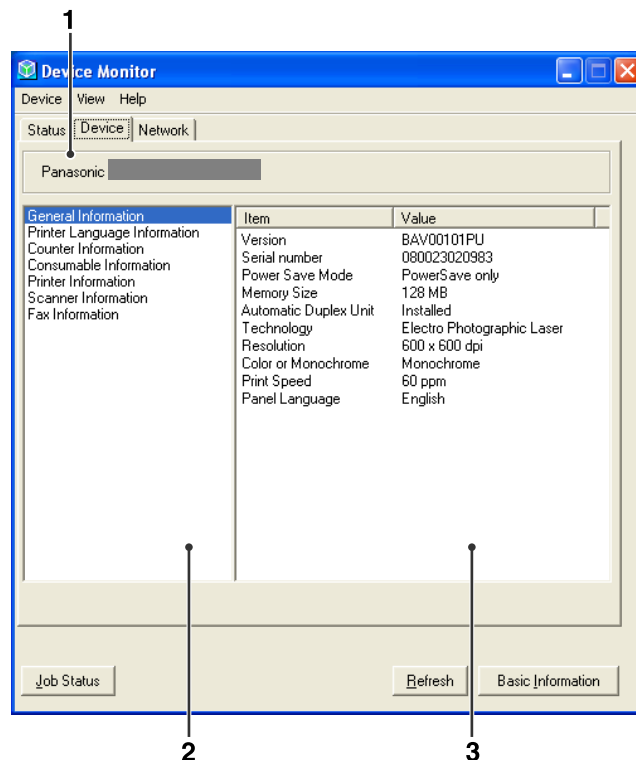
Main Window

■ Device Tab



(For Panasonic Color MFP)

- The displayed screen varies depending on the models.



(For Panasonic Monochrome MFP)

- The displayed screen varies depending on the models.

1. Model Name

Displays the **Model Name** and Interface information for the selected device.

2. Device Information: Left Panel

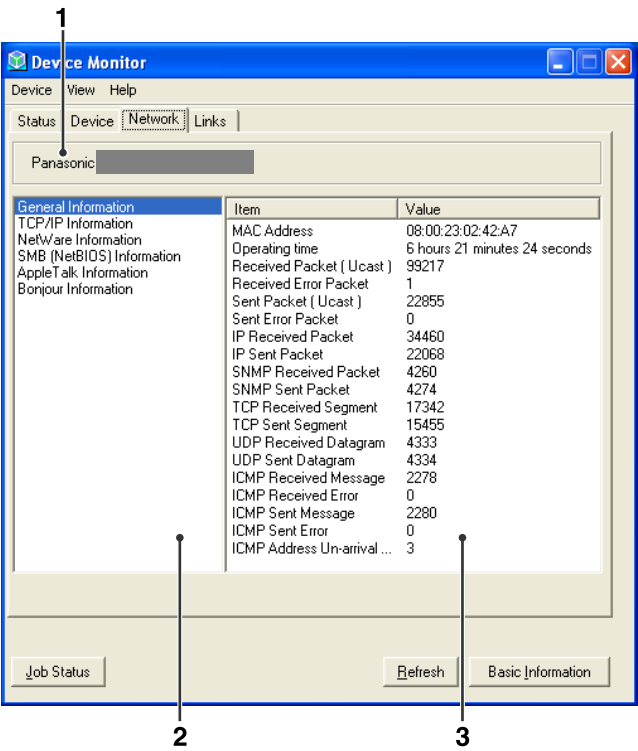
Displays device information categories for the device.

3. Device Information: Right Panel

Displays device information based on the category selected in the left-hand Panel.

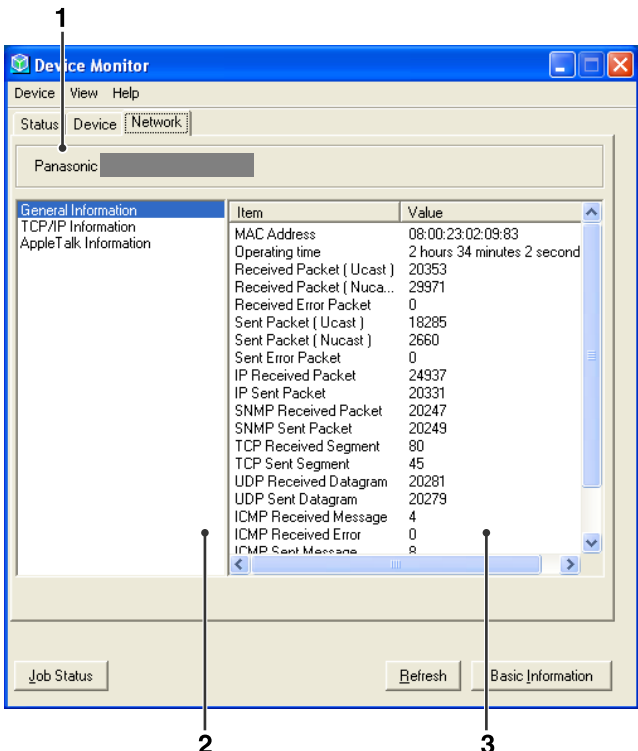
Main Window

■ Network Tab



(For Panasonic Color MFP)

- The displayed screen varies depending on the models.



(For Panasonic Monochrome MFP)

- The displayed screen varies depending on the models.

1. Model Name

Displays the **Model Name** and Interface information for the selected device.

2. Network Information: Left Panel

Displays Network information categories for the device.

Note:

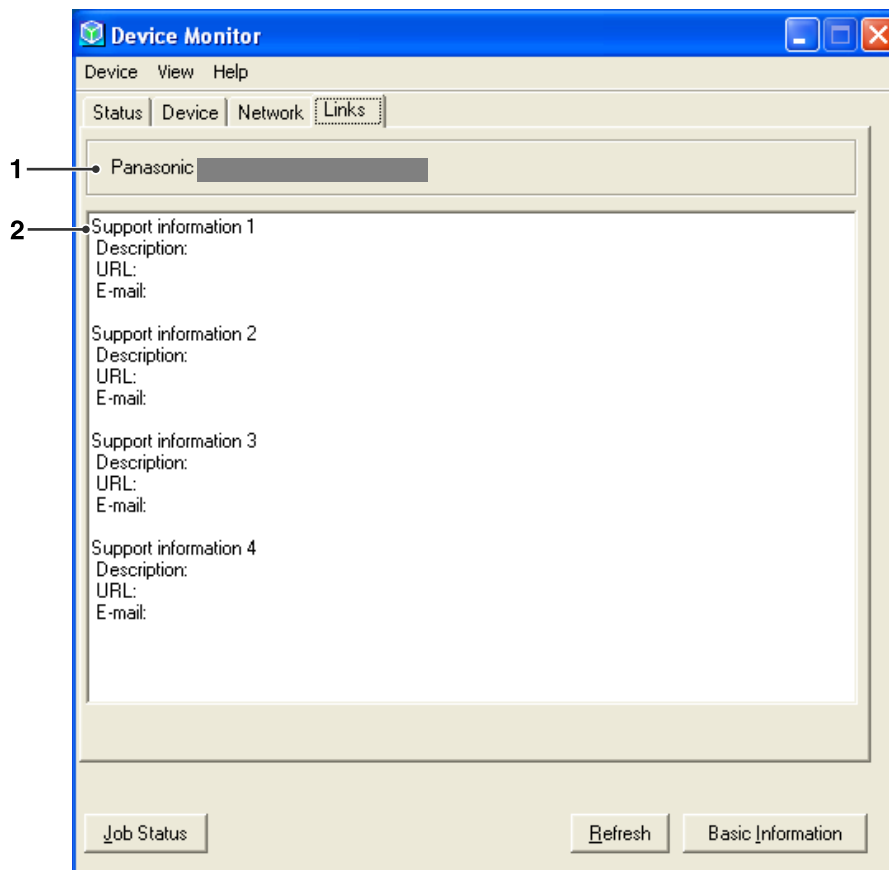
For DP-C406/C306/C266, NetWare Information is not displayed.

3. Network Information: Right Panel

Displays Network information based on the category selected in the left-hand Panel.

Main Window

■ Links Tab



1. Model Name

Displays the **Model Name** and Interface information for the selected device.

2. Support Information

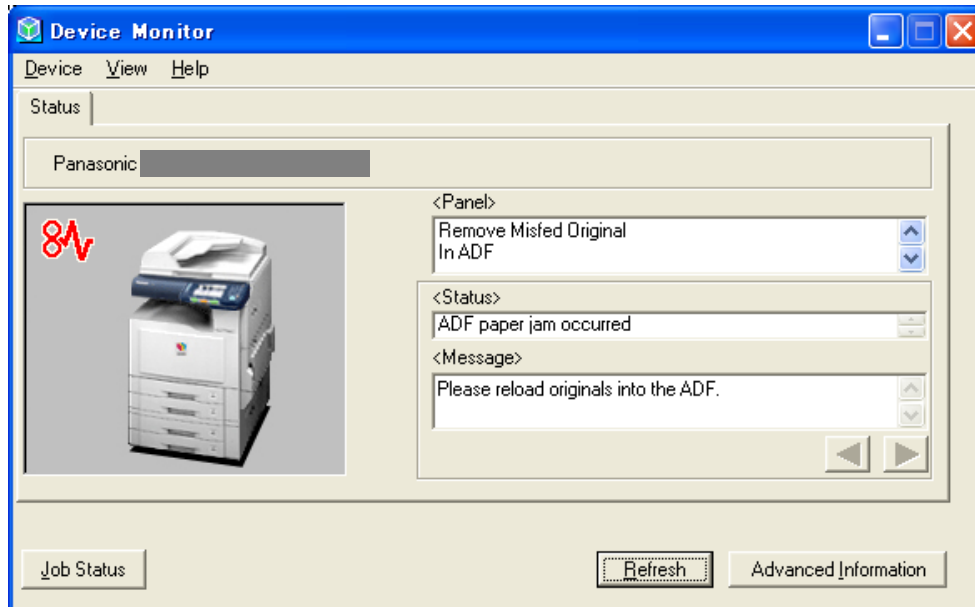
Displays the **Support Information**, **Description**, **URL**, and **Email Address** for the device.

NOTE

- The **Support Information** displayed in the **Links tab** can be edited by the user on the Embedded Web page.
Refer to **Links Menu** in the Operating Instructions (For Device Explorer and Embedded Web Server).
- **Links Tab** is not available for Panasonic Monochrome MFP.

Error Notify

If an error occurs in the selected printer while printing, the Device Monitor pops up automatically indicating the error.



Note:







- **Error Notify** only appears if the **Popup when error occurs** check box is selected in the **Device Monitor Settings**. See "Device Monitor Settings" (For Device Explorer and Embedded Web Server).
- If the **Beep when error occurs** check box is selected in the **Device Monitor Settings**, a warning beep also sounds at this time. See "Device Monitor Settings" (For Device Explorer and Embedded Web Server).
- This function is not available for Panasonic Monochrome MFP.

Taskbar Icon

If the Device Monitor is minimized, an indicator icon appears in the task bar showing the current status of the selected printer.



The indicator icon can represent the following six conditions.

 Ready	The printer is ready to print.
 Warning	A warning is present on the printer.
 Error	An error occurred on the printer.
 Power Save	The printer is in the power saving mode.
 Power Off	The printer has been turned off.
 Unknown	The condition of the printer is unknown.

Positioning the mouse cursor over the indicator icon displays the printer's **Model Name** and Interface information.



Memo

USA Only

WARRANTY

PANASONIC COMMUNICATIONS COMPANY OF NORTH AMERICA MAKES NO WARRANTIES, GUARANTEES OR REPRESENTATIONS, EXPRESSED OR IMPLIED, TO THE CUSTOMER WITH RESPECT TO THIS PANASONIC MACHINE, INCLUDING BUT NOT LIMITED TO, ANY IMPLIED WARRANTY OF MERCHANTABILITY OR FITNESS FOR A PARTICULAR PURPOSE.

PANASONIC COMMUNICATIONS COMPANY OF NORTH AMERICA ASSUMES NO RISK AND SHALL NOT BE SUBJECT TO LIABILITY FOR ANY DAMAGE, INCLUDING, BUT NOT LIMITED TO DIRECT, INDIRECT, SPECIAL, INCIDENTAL OR CONSEQUENTIAL DAMAGES OR LOSS OF PROFITS SUSTAINED BY THE CUSTOMER IN CONNECTION WITH THE USE OR APPLICATION OF THIS PANASONIC MACHINE. SEE YOUR DEALER FOR DETAILS OF DEALER'S WARRANTY.

For Service, Call: _____

Panasonic Communications Company of North America,
Unit of Panasonic Corporation of North America
One Panasonic Way
Secaucus, New Jersey 07094
<http://panasonic.co.jp/pcc/en/>

Panasonic Canada Inc.
5770 Ambler Drive
Mississauga, Ontario L4W 2T3
<http://www.panasonic.ca>

For Customer Support (Except for
USA and Canada Users):
Panasonic Communications Co., Ltd.
Fukuoka, Japan
<http://panasonic.net>

I0305-13128 (06)
PJQMC0428UA
December 2008
Published in Japan